



T450

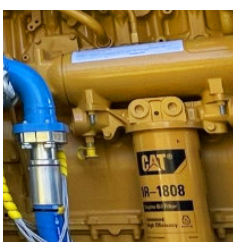
REVERSE CIRCULATION RIG

- EXPLORATION – RC
- EXPLORATION – AIRCORE

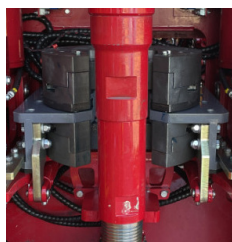
The Schramm T450 Series features the latest hydraulic systems for maximum performance and increased spare parts availability. Truck or crawler mountable, the T450 is equipped with a 30,000 lb (13,608 kg) lattice mast design. A deck mounted diesel engine provides reliable power for the hydraulic and air systems.

- 30,000 lb (13,608 kg) pullback
- 45° – 90° sliding angle mast
- Swing out control panel
- Hands free power breakout and pipe handling
- 12" table opening

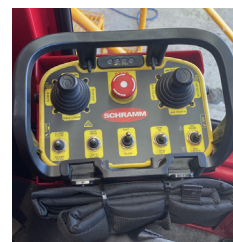
Rugged top drive rotation and efficient pipe handling mean high productivity on the job site. Heavy-duty factory installed components and accessories are available to meet a wide range of operating requirements around the world, wherever your exploration takes you.



CAT C15 T3 ENGINE
Latest generation Caterpillar Tier 3 engine for reduced emissions.



POWER BREAKOUT
Hands free Power Breakout used to safely make and break connections.



ROD HANDLING
KL style rod handler with optional remote control improves safety, reliability and production.

T450

REVERSE CIRCULATION RIG

SPECIFICATIONS

DECK ENGINE

- CAT C15 (Tier III) - 580 bhp (433 kw) @ 1800-2100 rpm
- Engine canopy fitted with fire suppression system
- 700 litre fuel tank

COOLING

- Aluminium vertical cooler, 55°C ambient design temperature

MOUNTING

- Truck or crawler options available

COMPRESSOR

- Atlas Copco ORX10 - 955 cfm @ 435 psi

TOP HEAD ROTATION

- Schramm dual motor rotary head
- Parallel configuration
- Heavy duty nylon head slides

MAST & FEED SYSTEM

- Operating angle, 45°-90°
- Mechanically locks in 5° increments
- Mast slide travel: 2,387 mm
- Head travel: 8,607 mm
- Feed cylinder: 5" bore x 2 1/2" rod x 171" stroke
- Top head driven by hydraulic cylinder through HD roller chain
- Pullback capacity: 30,000 lbs (13,608 kg)
- Pulldown capacity: 17,180 lbs (7,793 kg)
- Fixed mast foot

BREAKOUT & SPANNERS

- Metzke compact MB550 dual breakout
- Top & bottom pneumatic spanners
- Other options available

SLIPS TABLE

- 12" maximum opening manual open slips table (supplied with inserts)
- Optional Metzke 4512 hydraulic opening

ROD HANDLING & STORAGE

- KL DA554 rod handler
- Fitted with rod kicker
- Direct hydraulic or radio remote option available
- Tilting rod bin, 5x10 (50 rods, 3.5 inch) max 6 ft capacity (4" & 4.5" options available)

WALKWAYS & SAFETY

- Hydraulically operated passenger side walkway
- Rotation guard
- Service bulkhead for remote greasing and fluid drain
- Fire suppression 105L loss in pressure system
- Two (2) 9 kg dry chemical extinguishers

JIB BOOM/SURVEY WINCH

- Retractable survey winch rated to 200 kg
- Fitted with 500 m x 5 mm cable

HYDRAULIC SYSTEM

- Six (6) hydraulic pumps, two (2) fixed displacement and four (4) variable volume
- Hydraulic circuits are filtered and protected by relief valves and oil cooler

AIR & MUD LINES

- 1.5" air/mud lines rated to 1000 psi
- Full length hose socks
- Engineered whip checks
- Auxiliary air & booster lines

WATER INJECTION SYSTEM

- FMC E0143C water pump fitted under deck
- Three-way diverter valve for wash down, water injection and dust suppression

TOOL LUBRICATOR

- Positive displacement, air operated piston type pump
- Oil flow: 0-5 gal/hr (0-19 l/hr)
- 68.5 litre capacity

CONTROL PANEL

- Hinged control panel mounted LHS at rear of rig
- Fitted with overhead protection

LIGHTING & ELECTRICAL SYSTEM

- 24 volt DC electrical system
- LED lighting package
- Three (3) emergency stops located on rig

RIG WEIGHT & DIMENSIONS

Note: Approximate only; varies with rig configuration.

- OA length - transport: 11,700 mm
- OA width: 2,500 mm
- OA height - transport: 4,264 mm
- Approximate weight: 31,000 kg (truck dependent)

STANDARD ACCESSORIES

- Toolbox, 250 hr service kit

OPTIONAL EQUIPMENT

- Reverse Circulation package
- Schramm Drillers Monitoring
- See your Schramm representative for additional options

Rig performance is directly related to conditions encountered in the field. Rig specifications presented here are theoretical values based on a 100% efficiency factor. Schramm, Inc. continuously improves its products and reserves the right to change specifications, design, prices, and terms at any time without notification or obligation. These specifications do not extend any warranty, expressed or implied, nor do they, or Schramm, Inc. make or imply any representation of the machine's merchantability or fitness for a particular purpose.

Schramm USA
800 E. Virginia Avenue
West Chester, PA 19380
USA

Phone +1 610-696-2500
Fax +1 610-696-6950

Schramm Australia
54 Banksia Road
Welshpool, WA 6106
AUSTRALIA

Phone +61 8 9334-5900
Fax +61 8 9334-5910

Schramm Hammers & Bits
60 Paramount Dr.
Wangara, WA 6065
AUSTRALIA

Phone +61 8 9302-5317
Fax +61 8 9302-3715

