



T450MIIA

PTO, WATER WELL AND GEOTHERMAL RIG

- WATER WELL
- GEOTHERMAL

Nothing beats a Schramm T450MIIA PTO rig for residential, commercial, geothermal or humanitarian water well drilling applications around the world.

Proven in civilian and military operating environments, this rig is built for applications using combination air rotary and mud rotary drilling methods. It can be configured for a wide range of mud pump, air and auxiliary systems.

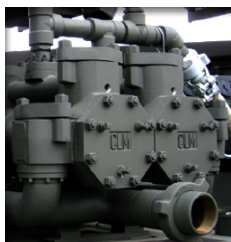
Any climate, any terrain, Schramm rigs are built your way, delivering maximum performance and reliability in the most extreme environments on earth.

- Up to 30,000 lbf (133 kN) pullback
- Sliding top head drive
- 16.5 inch (42 cm) table opening
- Development compressors available to 500 cfm @ 200 psi (14.16 m³/min @ 13.79 bar)
- Additional options include pipe carousels, remote controls, mud pumps, mud pit and other special items to meet special requirements



SLIDING TOP-HEAD DRIVE

Allows winch to pull directly over hole centerline.



MUD PUMP OPTIONS

A variety of piston or centrifugal mud pumps are available.



PIPE HANDLING

15 Rod Pipe Carousel improves safety, reliability and production.

T450MIIA

PTO, WATER WELL AND GEOTHERMAL RIG

SPECIFICATIONS

TRUCK

- International 6 x 4, with optional 6 x 6 available
- 425 hp (317 kW) @ 1,800 rpm
- 10 speed transmission
- 46,000 lb (20,865 kg) full locking rear axle
- 66,000 lb (29,937 kg) GVWR
- Separate drill rig sub-frame design permits mounting on various trucks or special purpose vehicles to meet specific user requirements.

MAST

- Structure tubular steel, all welded, lattice type construction

TOP HEAD DRIVE

- Single reduction oil bath gearbox with dual heavy duty, single speed, disc valve type motors.
- Infinitely variable rotation speed in both series at parallel operating ranges
- Top head hydraulically slides off hole for casing handling by wire line
- 118 rotation hp (88 kw)
- Maximum Torque: 0-90 rpm @ 6,075 ft-lb (8,235 N-m)
- Maximum RPM: 0-180 rpm @ 3,030 ft-lb (4,105 N-m)
- 2-11/16 inch (68 mm) diameter spindle thru hole

FEED SYSTEM

- Top head driven hydraulic cylinder through heavy duty leaf chain
- 25 ft (7.62 m) head travel
- 30,000 lbf (133.4 kN) pullback capacity
- 180 fpm (54.8 mpm) pullback speed
- 17,500 lbf (77.8 kN) pulldown capacity
- 135 fpm (41.1 mpm) pulldown speed

DRILL TABLE

- 16.5 inch (42 cm) maximum diameter through the slip box

DRILL PIPE AND CASING

- 20 ft (6.1 m) drill pipe length
- 25 ft (7.6 m) maximum casing length

OUTRIGGERS

- Dual Front - 4 inch (101 mm) bore x 41 inch (1.04 m) stroke
- Dual Rear - 4 inch (102 mm) bore x 36 inch (.91 m) stroke

WINCH

- 160 fpm (48 mpm) bare drum line speed
- 15,000 lbf (66 kN) bare drum line pull
- Planetary design with spring applied hydraulic release brake

HYDRAULIC SYSTEM

- Open loop load sensing system
- 120 gallon (454 l) system capacity
- 10 micron filtration

LIGHTING & ELECTRICAL SYSTEM

- Mast - (3) 60 watt floodlights
- Control Panel - (2) 60 watt floodlights
- Work - (3) 70 watt halogen lights

STANDARD ACCESSORIES

- Tool box, pipe handling sling, breakout wrench,
- 50 hour maintenance kit

OPTIONAL EQUIPMENT

- Pipe carousel with remote control
- Winches for multiple applications
- 60 inch (1.524 m) breakout wrench
- Water injection system
- Mud pump: Piston or Centrifugal
- Air compressor
- Full Side Walkways
- Welder, Hydraulic
- Transportable Mud-Pit
- Grout Mixer
- See your Schramm representative for additional available options

Rig performance is directly related to conditions encountered in the field. Rig specifications presented here are theoretical values based on a 100% efficiency factor. Schramm, Inc. continuously improves its products and reserves the right to change specifications, design, prices, and terms at any time without notification or obligation. These specifications do not extend any warranty, expressed or implied, nor do they or Schramm, Inc. make or imply any representation of the machine's merchantability or fitness for a particular purpose.

Schramm USA
800 E. Virginia Avenue
West Chester, PA 19380
USA

Phone +1 610-696-2500
Fax +1 610-696-6950

Schramm Australia
54 Banksia Road
Welshpool, WA 6106
AUS

Phone +61 8 9334-5900
Fax +61 8 9334-5910

AirDrill Hammers & Bits
60 Paramount Dr.
Wangara, WA 6065
AUS

Phone +61 8 9302-5317
Fax +61 8 9302-3715

